

Calendar Dates TERM 1 2018

Week 1

Monday 29th January
- Years 8 and 12 Start

Tuesday 30th January
- L1 Whole School Assembly

Wednesday 31st January
- School Captains Student Voice Nominations

Week 2

Week 3

Tuesday 13th February
- Principals Tour
- 6:00pm Governing Council Meeting
- 6:30pm Annual General Meeting / Acquaintance Night

Week 4

Monday 19th February
- School Photos
- School Photos catch up day

Week 5

Tuesday 27th February
SPORTS DAY

Final address for 2017, from our Principal, Mr David Harriss

It is with great pleasure that I talk to you for the last time in 2017. What a year it has been. At the start of the year we were completing plans for a \$2.5 million STEM and grappling with ensuring student learning was the first and foremost consideration. 10 short months later, with the STEM developments just starting, we are planning a \$20 million redevelopment of the whole school, to be spent over the next 4 to 5 years. Initial plans include bringing the rest of the main building up to the level of the new STEM wing, upgrading our Design Technologies suite (Tech Studies to us older generation), removing all of the old transportable buildings and replacing them with a new Creative Arts Centre and adding to our Physical Education / Football Academy facilities. We will also be changing a great deal of the external look of the school, and even building in a safer and more efficient drop off area for parents to use. These are the initial plans, however at this stage we are unsure as to how many of these we will be able to "fit under the salary cap". Whatever eventuates, I am so very pleased that at last we will be able to bring the standard of our buildings up to the standard of our teaching!

Year 12 results will be available Tuesday 19th December, either online or via post, I look forward to reading them with great interest and optimism. All other Year level end of year reports are finalised as well. From the end of year presentations our Year 8 and 9 students that I have seen, and reports from teachers running them, the standards have never been higher. We have so much to be proud of with our students. I look forward to working with you and our staff to develop those standards even more in 2018.

We have several long serving staff members who will sadly not be returning in 2018. Ms Tess Szwedzinski and Mrs Deb O'Leary are both retiring after many years' service to the department, but more importantly to Underdale High School. I'm sure you will join me in congratulating them on the contribution they have made to our students, and wish them well in their leisure years (although after a while they may wonder how they ever had time to work in the past!) We are also saying goodbye to Ms Nisha Bag, who is leaving us after many years to take up a teaching role at Urrbrae High School. She will be sorely missed, and has produced fantastic results with our kids. Our loss is Urrbrae's gain, and I would like to wish her all the best. Dayna Hall will also not be returning in 2018, and we would like to wish her all the best with the birth of her second child. There are a number of contract teachers and SSO staff who will be finishing up this year, and whilst we are very hopeful of getting some of them back for 2018, I would like to thank them all for their contributions in 2018, and for some of them, over the past several years.

I would like to thank the Underdale High School parent community for the support they give the school and their children. Without that encouragement and drive from home, our kids could not achieve their potential and push themselves past their expectations. I look forward to even more parents joining in the education partnership in 2018. In that vein, I need to acknowledge the work of your Governing Council. This group has been oversubscribed for several years now, which is a great situation to be in, but with several members not returning in 2018 due to their children finishing, there will be positions available, and I look forward to the AGM on 13th February 2018.

Finally, I would like to thank all of my staff, teaching and non-teaching, who have made such a difference in our kids life in 2017. It requires a great deal of dedication and energy to create a caring, inclusive community that provides opportunities for innovative, challenging and creative learning, valuing success and wellbeing for all. I am proud to say that our team has that dedication and energy. I am so looking forward to 2018, building on all of the successes they have created in 2017.

Please have a happy and safe festive season, and we will see you in 2018!



Year 8 and 9 Panel Presentations

This presentation is an important element of the year 8 and 9 program. It provides students an opportunity to reflect on their learning journey throughout the year and identify some key achievements. This year the quality of the presentations was of a high standard which is an indication of individual student's planning and effort in creating their presentation, as well as the support provided by their home group teachers. I would like to extend a personal thankyou to the many parents, family members and friends who attended the presentations and I really appreciate your willingness to be involved.

Lesley Holliday
Deputy Principal

STUDENT PADLOCKS

At the beginning of 2018, all Underdale High students will be issued with a padlock and two keys by their Home group Teacher. STUDENTS will be responsible for their padlock and keys until they complete their education at Underdale. If they lose their two keys the student can pay the book room \$11 for new keys to be cut. When they leave the school they will return the padlock and two keys like they do with books to the book room.



Year 12 (2017) Students.

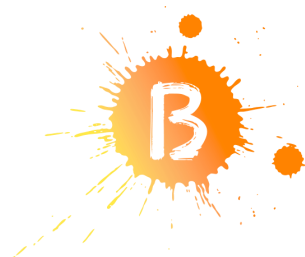
We are inviting year 12 students, who are not involved in the B Part of It study, to have a throat swab taken, complete a consent form and a questionnaire in 2018. Students who wish to participate can visit the B Part of It stands at Orientation week ('O' Week – week of 19th February 2018) located at the main campuses of the University of Adelaide, Flinders University, and the University of South Australia.

Students will be reimbursed with a \$40.00 Coles Myer Voucher for their time and travel costs.

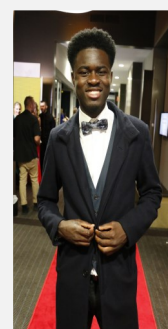
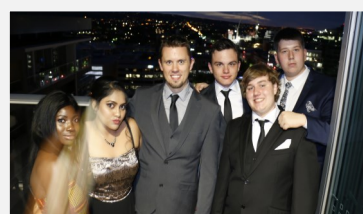
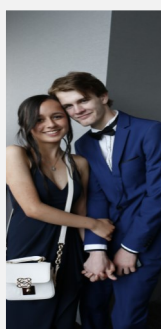
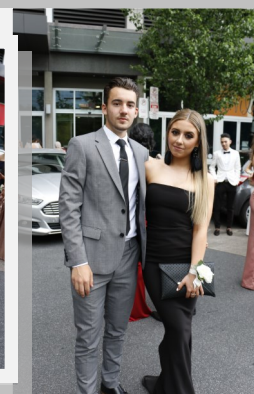
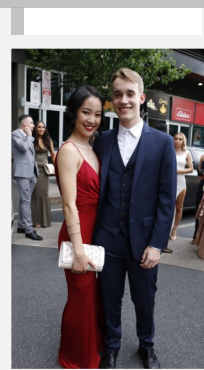
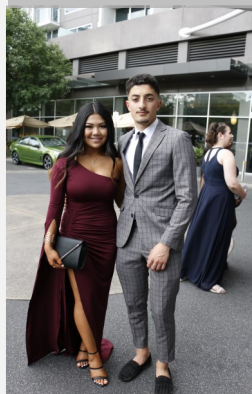
Students who are already participating in the B Part of It Study will receive a letter in the next few weeks which will provide further information about their involvement in the study, including catch-up locations for vaccinations.

Further details regarding where and how Year 12 students can be involved in the study will be available on the B Part of It website:

<https://www.bpartofit.com.au/>



2017 Formal - 22nd November 2017 Pullman Hotel



Illness / early leave sign out & late arrival sign in procedures

Unfortunately we have had a large number of students not following procedures that have been put in place when they are feeling unwell, they have to leave school early or they arrive late to school.

The information below outlines the procedures **all students must follow.**

Feeling unwell?

Recently, too many students have been calling or messaging their parents/caregivers **during class** to inform them they are unwell. As you can imagine, this becomes problematic when a teacher is trying to teach a lesson.

After the student has contacted their parent / caregiver, they then have to contact the school to let us know that their child who is here at school is unwell. This then means a staff member has to leave their duties to go and find the student, get them to go to the Book Room to sign out and go home. Seems like a lot of work right? But wait there is a much easier way to achieve the same result!

A much easier procedure:

When a student is feeling unwell, they need to tell their current lesson teacher who will then send them to the **Book Room.**

The Book Room staff member will then phone the student's parent/caregiver to inform them of their illness, and organise for them to be picked up and who will be picking them up.

OR - If the parent / caregiver would like their child to walk or catch the bus home, they must call the school back when their child arrives home, to confirm the student has arrived home safely.

Need to leave early?

If for any reason a student needs to leave school early, they **must** have a note signed by a parent / caregiver which gives them permission to leave school and **why**.

The student will need to show this signed note to their **current lesson teacher**, who will then grant them permission to leave class. The student is then to go to the **Book Room**, show the staff member their signed note, and sign out.

Late to school?

If students are late, they **must** go straight to the Book Room and sign in.

If the student has a note from a parent / caregiver their lateness will be explained. If they don't, it will remain unexplained until a parent contacts the school to explain.

It's as easy as that! We do not have these procedures in place to be difficult. Staff at Underdale have a duty of care to all students. Following these procedures ensures the student's wellbeing and safety is accounted for at all times during school hours.

Underdale High School 25km School Zone

We have had a number of reports and complaints regarding cars speeding when students are present in our school zone, cars not stopping and even overtaking a stopped vehicle at our school crossing when students and staff have been crossing the road.

Whilst we are aware that this also equates to the wider community, unfortunately some parents and students have been reported for these offences.

School zones are installed on most roads around schools - as shown by these signs. Our School Zone is located at the front of the school, on Garden Terrace and around the corner in Joyce Avenue.

A zigzag white line is also marked on the road to let drivers know they are approaching our School Zone.



Drivers must not exceed 25km/h at any time of the day or night when a child is in the zone.

This includes children walking or riding a bicycle either on the road, footpath or median strip.

The lower speed limit applies whenever children are in the zone, including weekends, school holidays, during the day and at night.

It makes sense to slow down as you approach a school at all times of the day and night to check if there are children in the area. Children can be present outside of normal school hours because of many activities that take place in the school.

Emu Crossing

An Emu Crossing has a red 'Children Crossing' flag displayed on red and white striped posts.

When the flags are displayed, drivers **must** give way to any pedestrian crossing or about to cross the road.



Emu crossings are located within School Zones, which have a speed limit of 25km/h when children are present at school, again at any time of the day or night when a child is in the zone.

Even if the 'Children Crossing' flags are not displayed, the **25km/h school zone speed limit still applies if there are children present.**

To maintain the health, safety and wellbeing of our students, staff and community, please make sure you abide by these very basic road rules.

If you are witnessed failing to follow these road rules, your details will be passed on to SAPOL.



Government of South Australia
Department of Planning,
Transport and Infrastructure



SOUTH AUSTRALIA POLICE
KEEPING SA SAFE